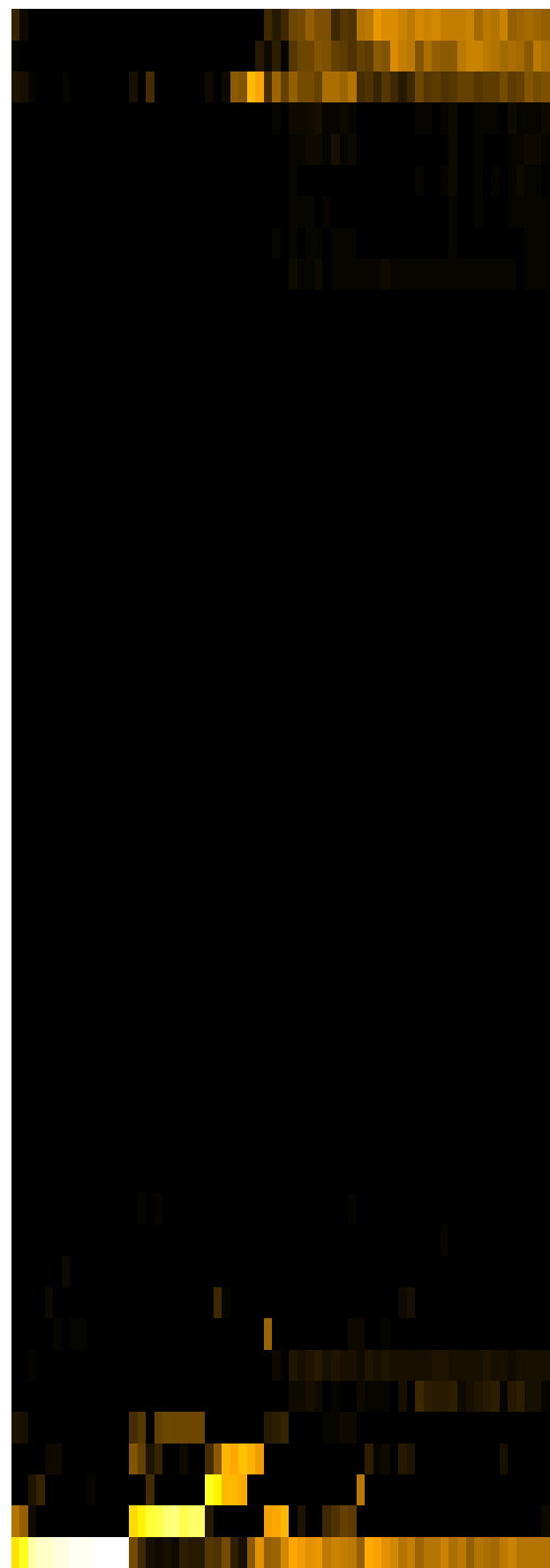
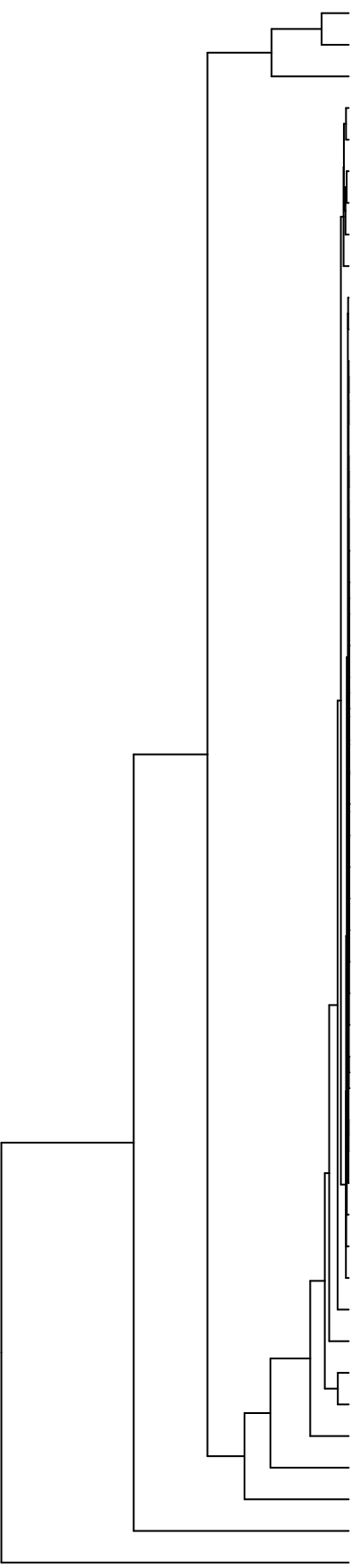


Group006
 E Final -PMA
 B Final -PMA



Veillonella
 Haemophilus
 Neisseria
 Eikenella
 Aggregatibacter
 Campylobacter
 Porphyromonas
 Gemella
 Schaalia
 Actinomyces
 Prevotella
 Lancefieldella
 Lachnoanaerobaculum
 Lautropia
 Saccharibacteria_(TM7)_[G-1]
 Saccharibacteria_(TM7)_[G-6]
 Catonella
 Oribacterium
 Capnocytophaga
 Phyllobacterium
 Agrobacterium
 Delftia
 Acidovorax
 Lachnospiraceae_[G-2]
 Serratia
 Novosphingobium
 Leifsonia
 Sphingobium
 Riimerella
 Microbacterium
 Siccationidurans
 Saccharibacteria_(TM7)_[G-5]
 Absconditabacteria_(SR1)_[G-1]
 Cutibacterium
 Acinetobacter
 Solobacterium
 Stomatobaculum
 Alloprevotella
 Staphylococcus
 Leptotrichia
 Pseudomonas
 Raoutella
 Rothia
 Granulicatella
 Fusobacterium
 Salmonella
 Klebsiella
 Enterobacter
 Citrobacter
 Streptococcus

F28914.S426
 F28914.S590
 F28914.S589
 F28914.S591
 F28914.S429
 F28914.S586
 F28914.S592
 F28914.S408
 F28914.S566
 F28914.S402
 F28914.S406
 F28914.S403
 F28914.S561
 F28914.S564
 F28914.S568
 F28914.S427
 F28914.S428
 F28914.S088
 F28914.S084
 F28914.S082
 F28914.S083
 F28914.S247
 F28914.S246
 F28914.S244
 F28914.S267
 F28914.S271
 F28914.S108
 F28914.S265
 F28914.S270
 F28914.S241
 F28914.S110
 F28914.S109

Genus

Samples